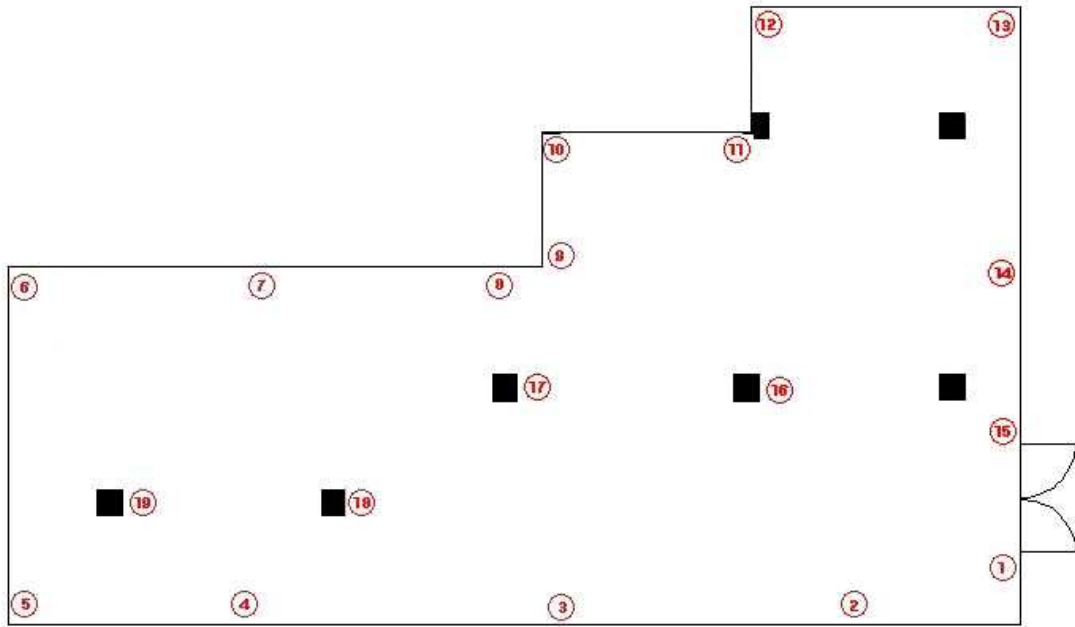
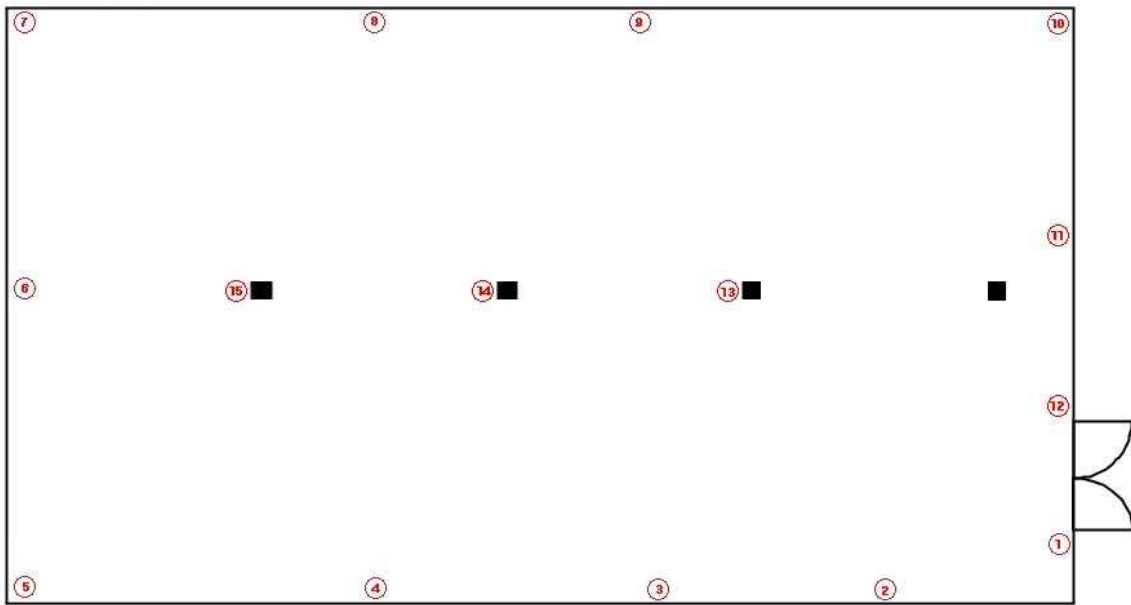


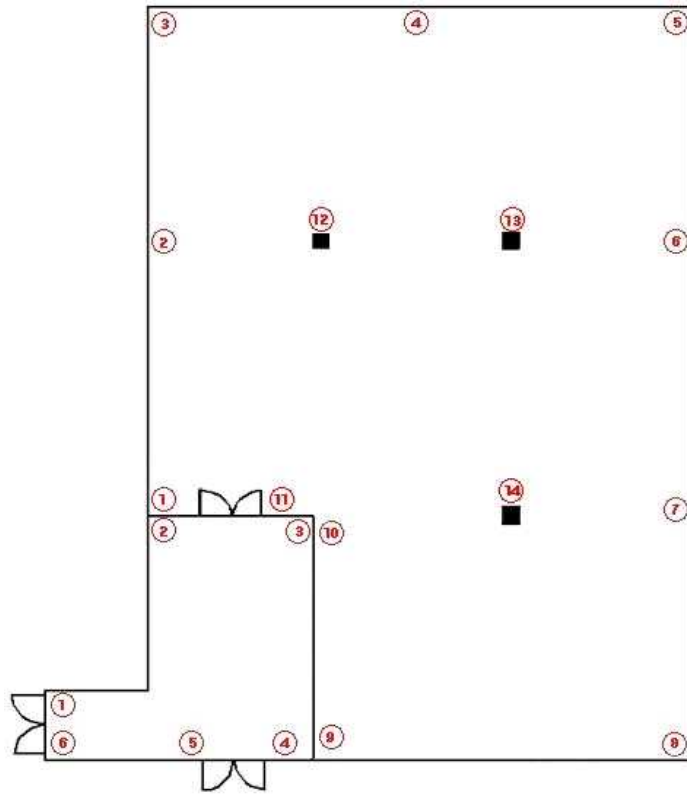
서울관 트랩 배치도



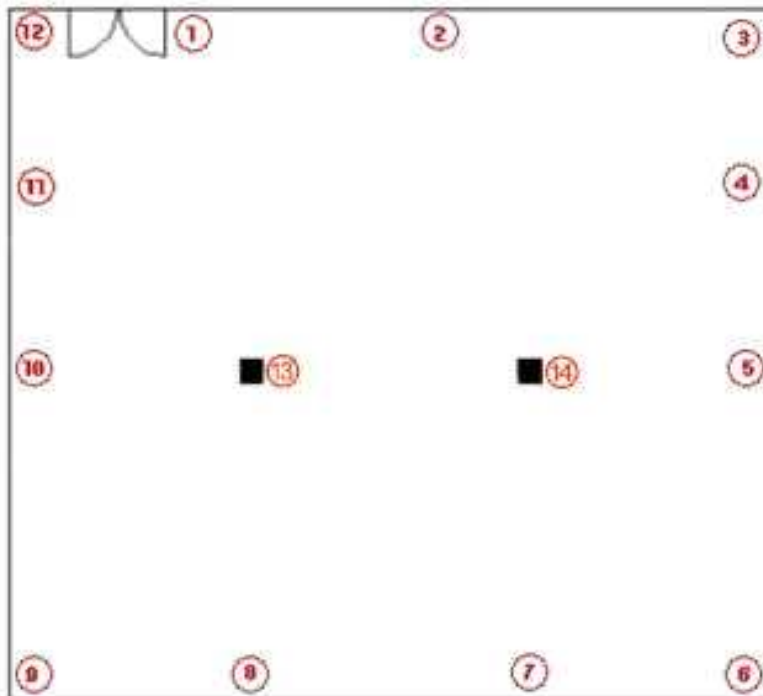
1수장고



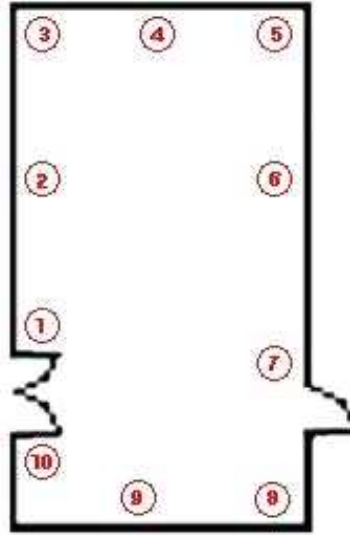
2수장고



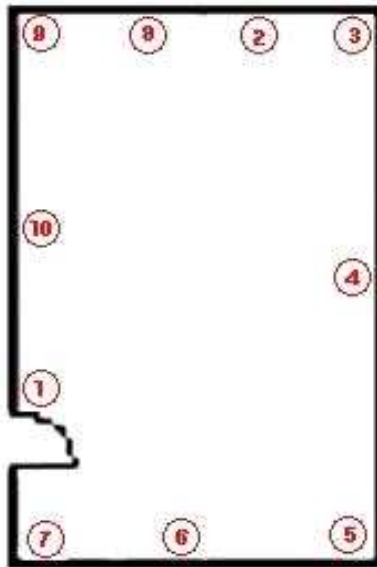
3,4수장고 전실, 3수장고



전시과 수장고(4수장고)

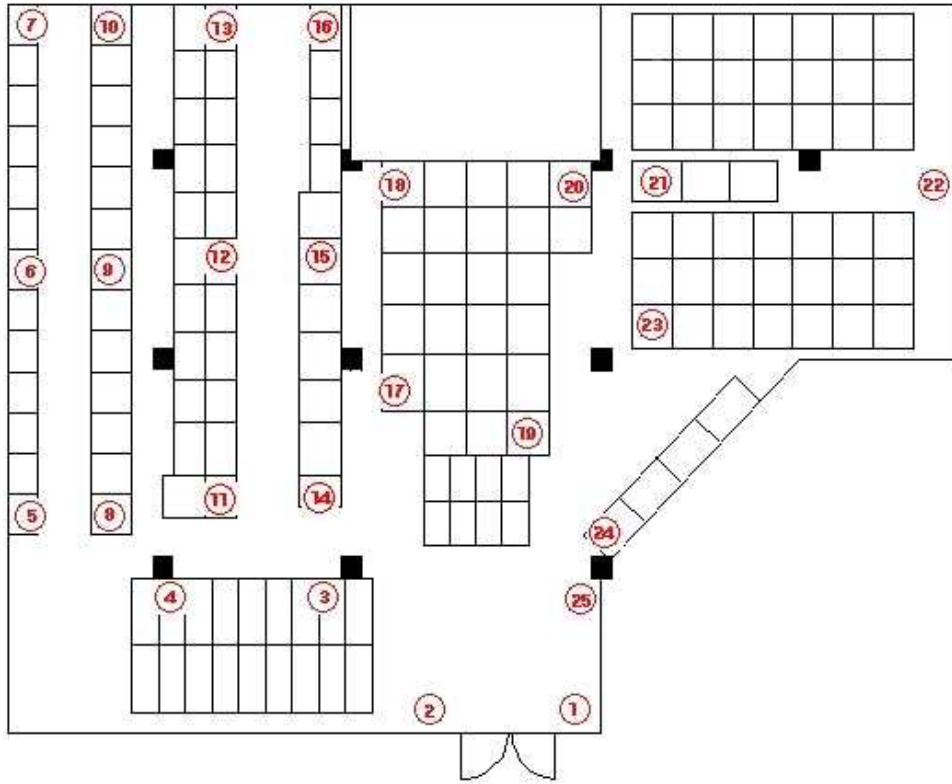


전시과 수장고(구 심의실)

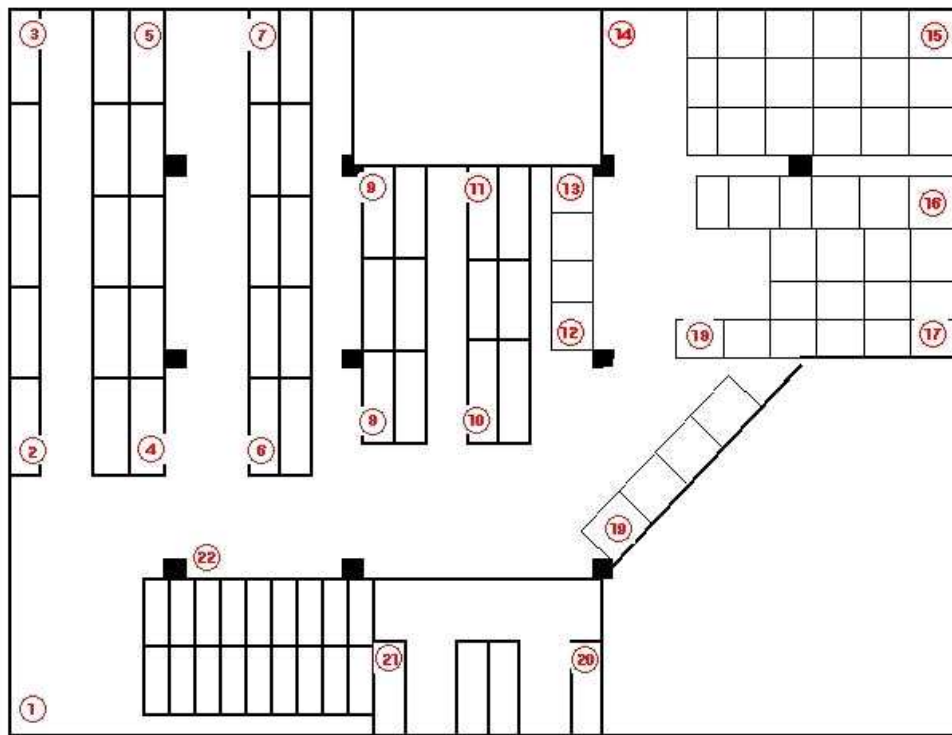


전시과 수장고(11수장고)

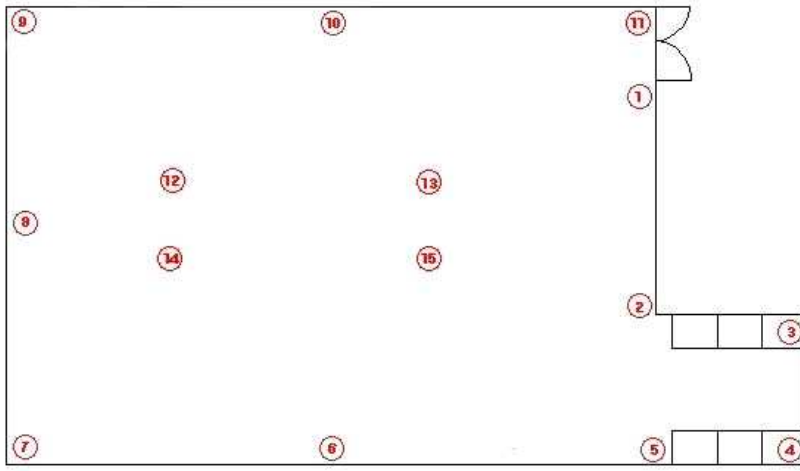




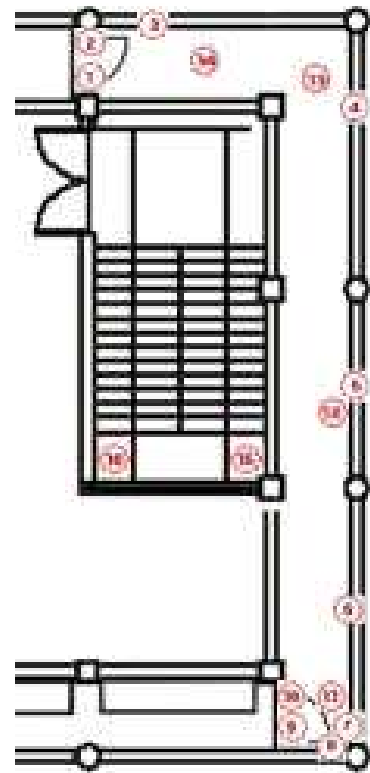
9수장고



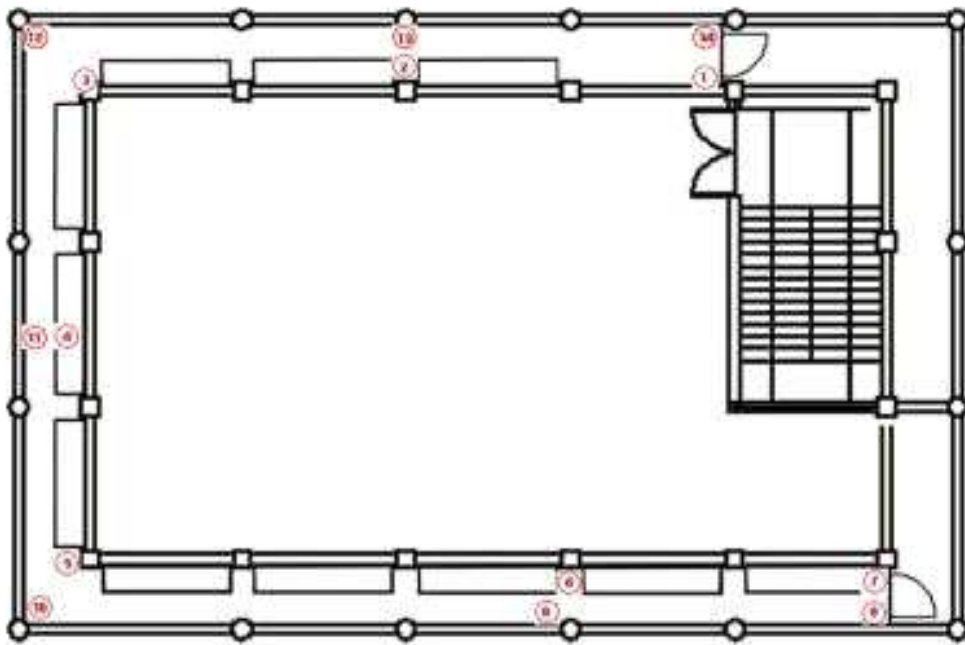
10수장고



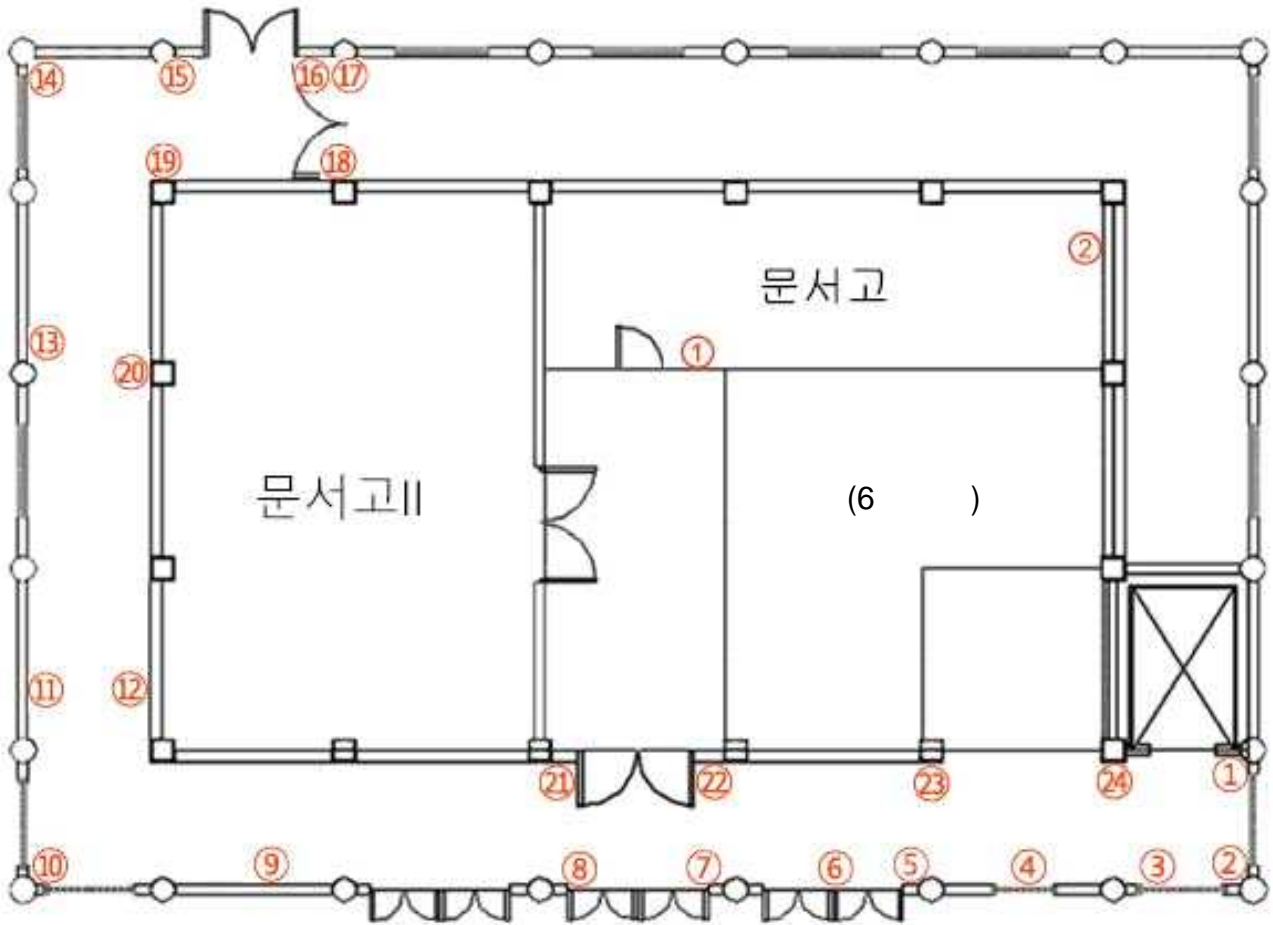
7수장고



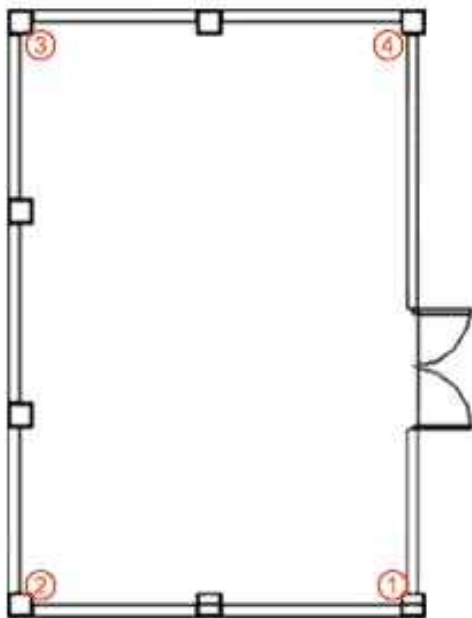
7수장고 복도



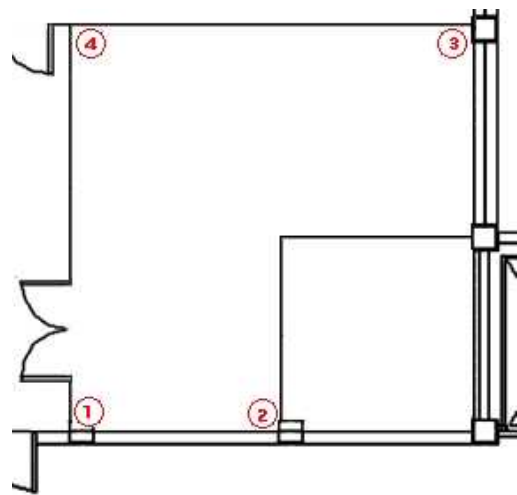
특수자료실(12수장고)



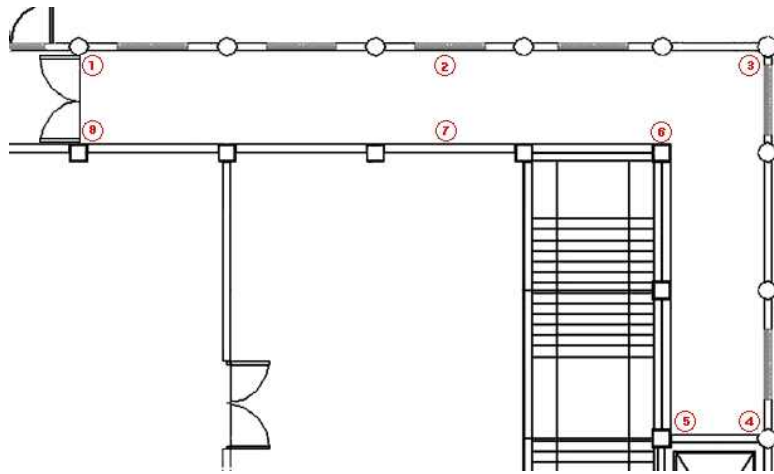
6수장고 복도 (23.4.26~)



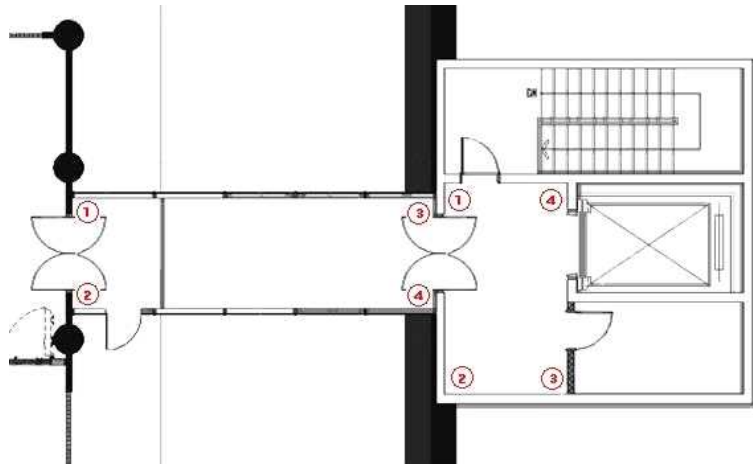
문서고 II



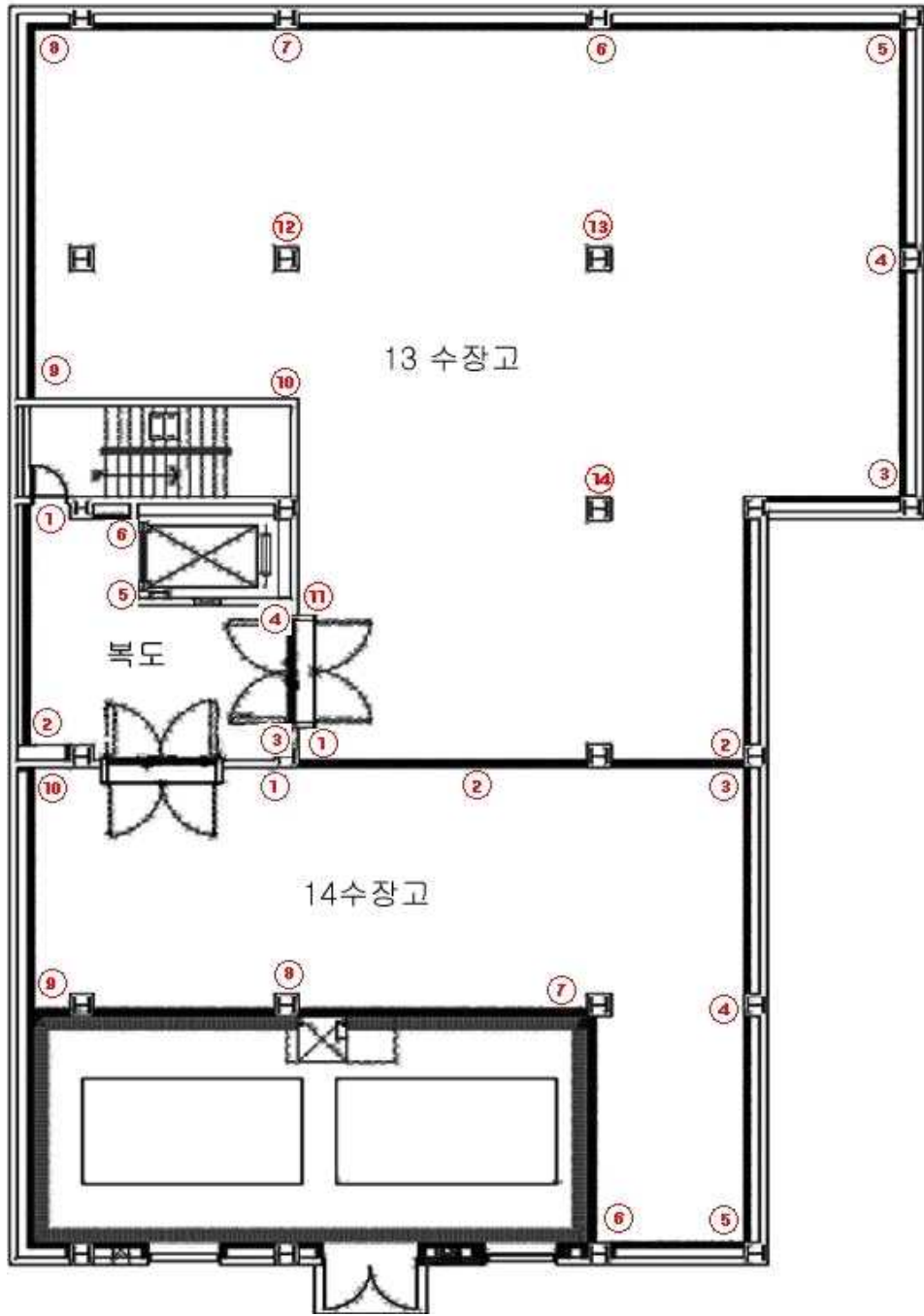
전시과 수장고(6수장고)



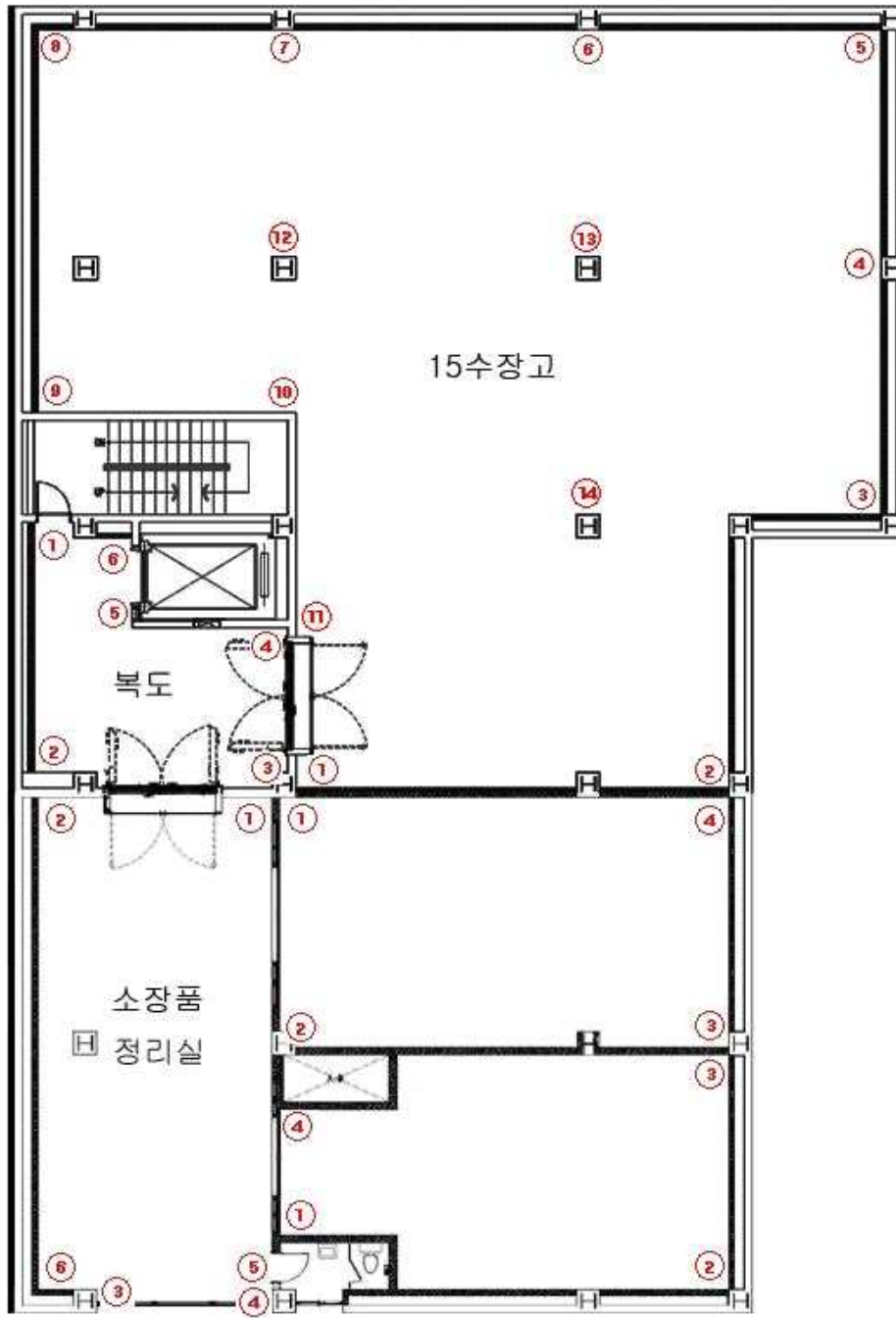
회랑



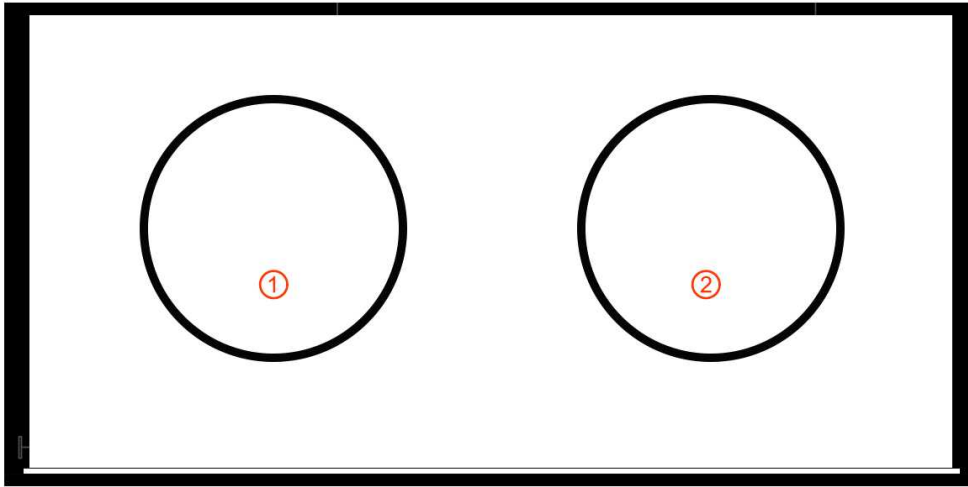
신축 수장고 - 연결 통로, 3층



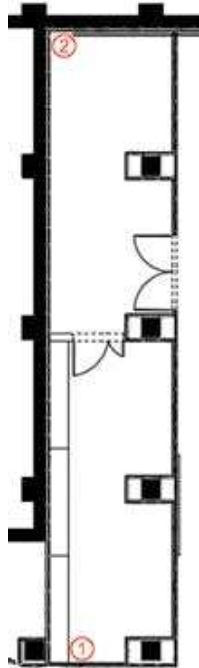
13,14수장고 복도, 13수장고, 14수장고



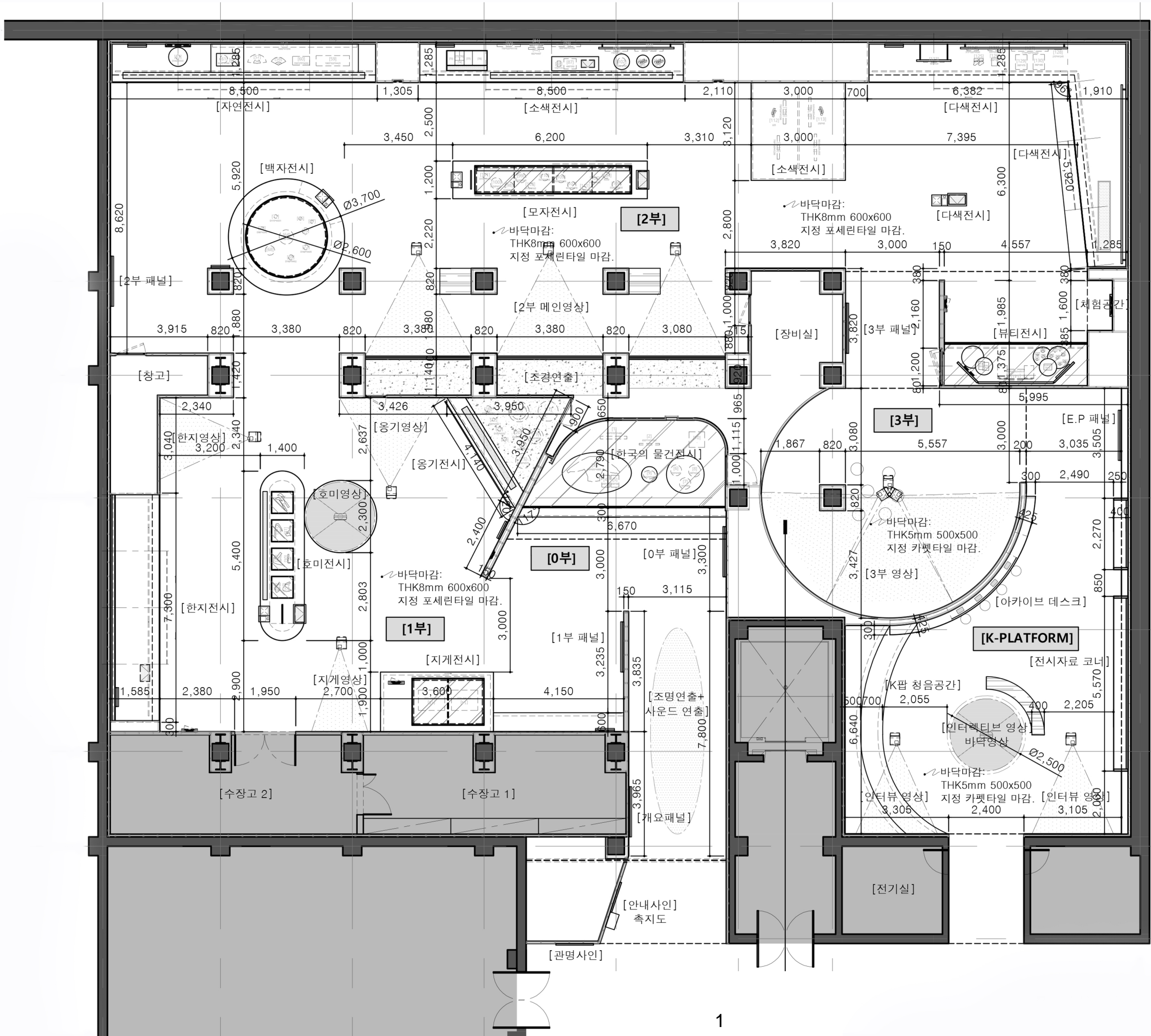
15수장고, 15수장고 복도, 소장품정리실, 임시수장고, 준비실

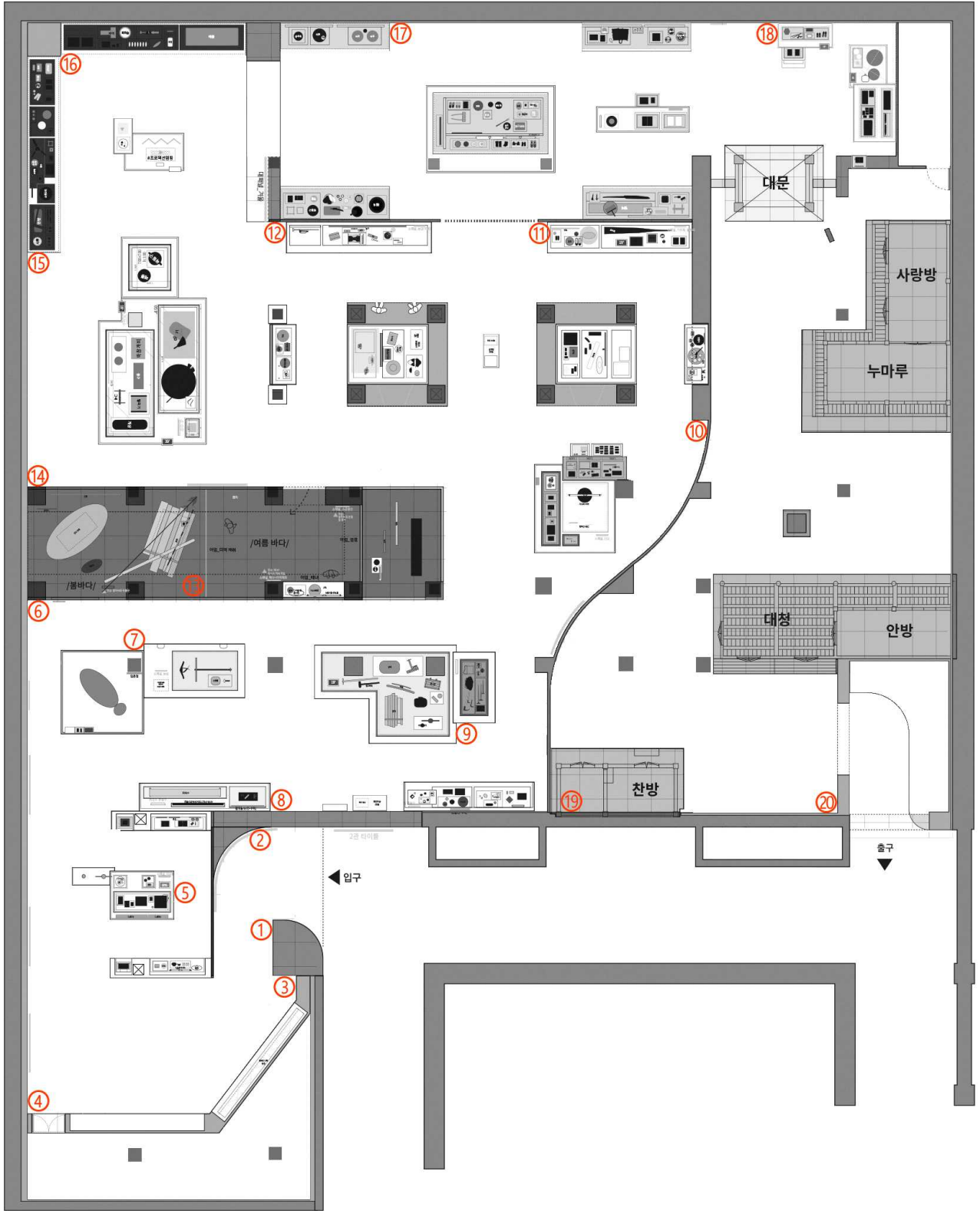


장승 (로비)

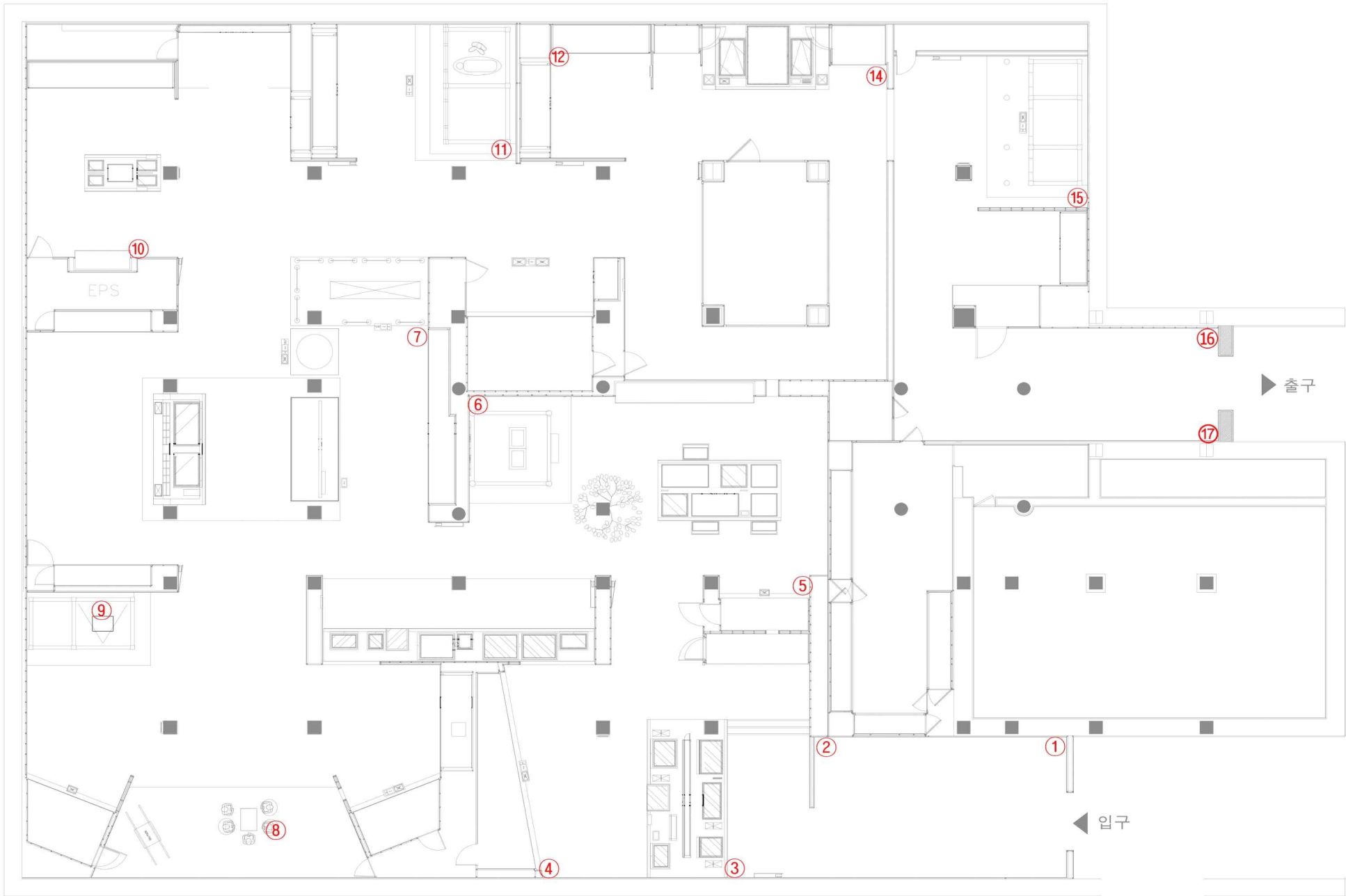


상설전시 1관(사진실, 수장고)





상설전시 2관



상설전시 3관(22.4.22~), 13번트랩X (23.4.26~)