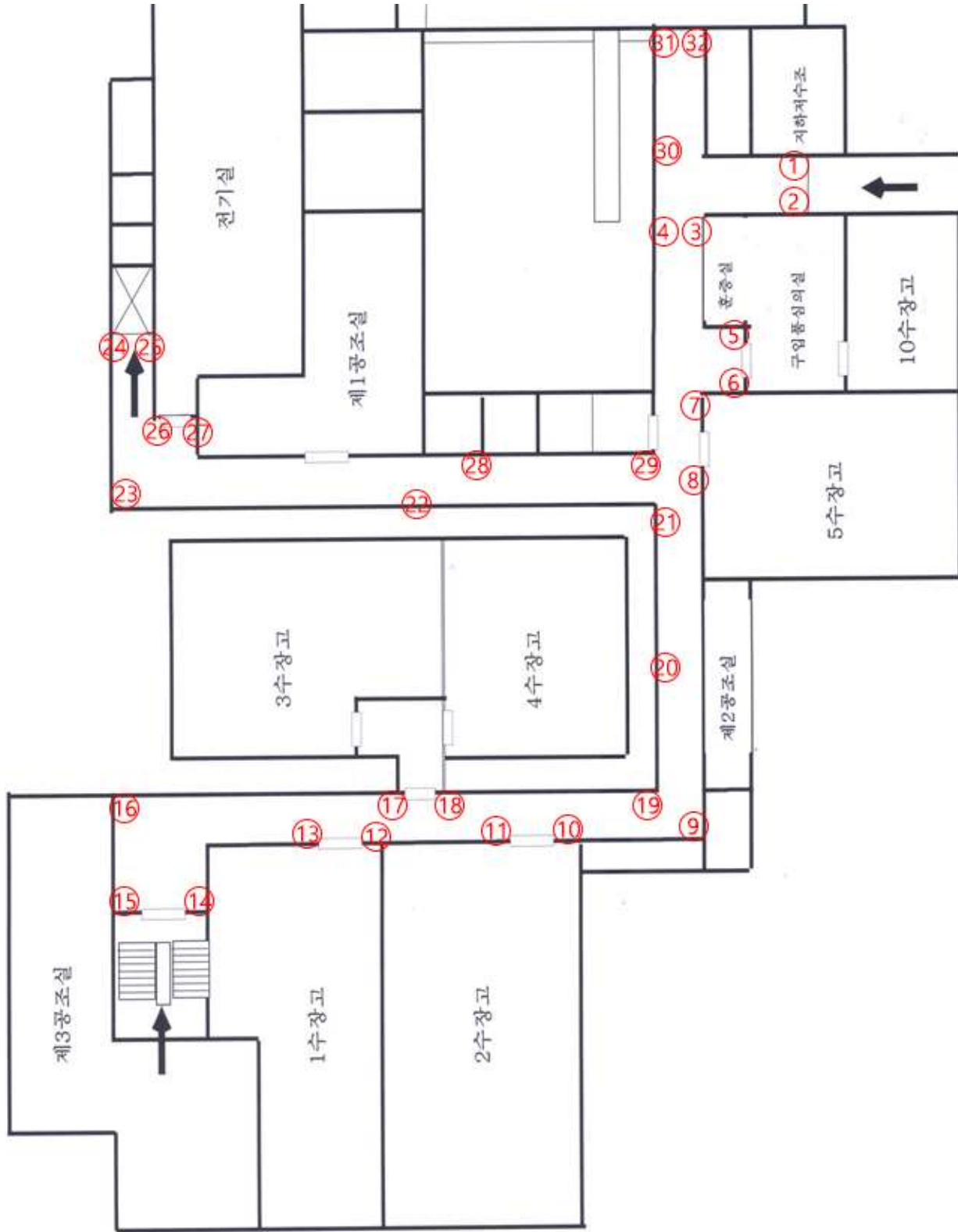
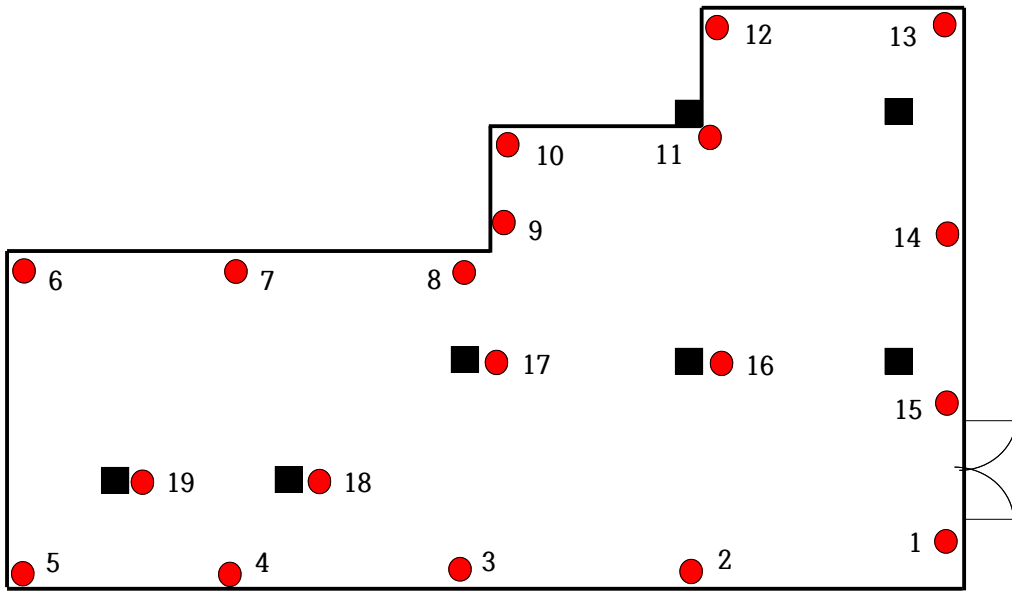


서울관 트랩 배치도

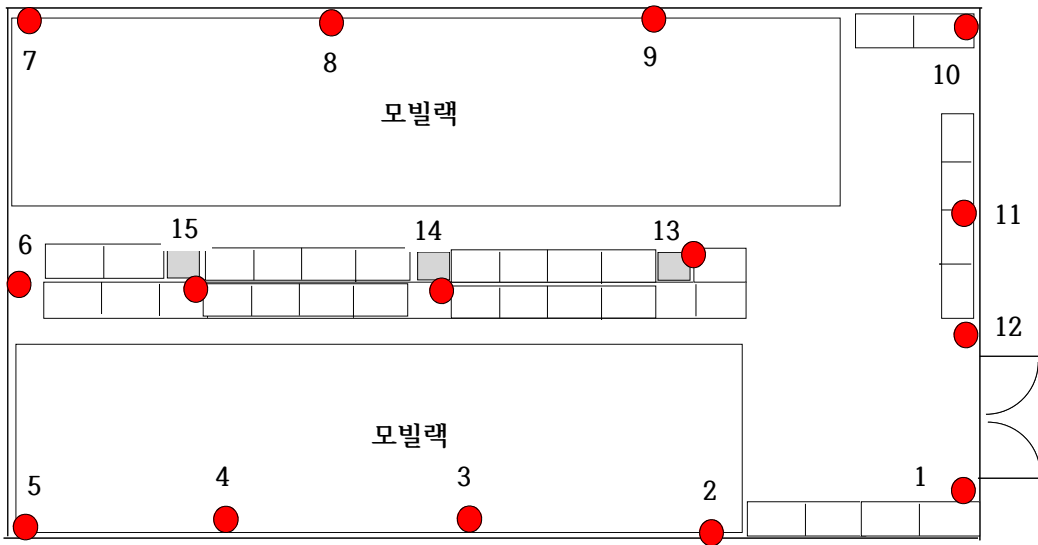
1. 지하수장영역



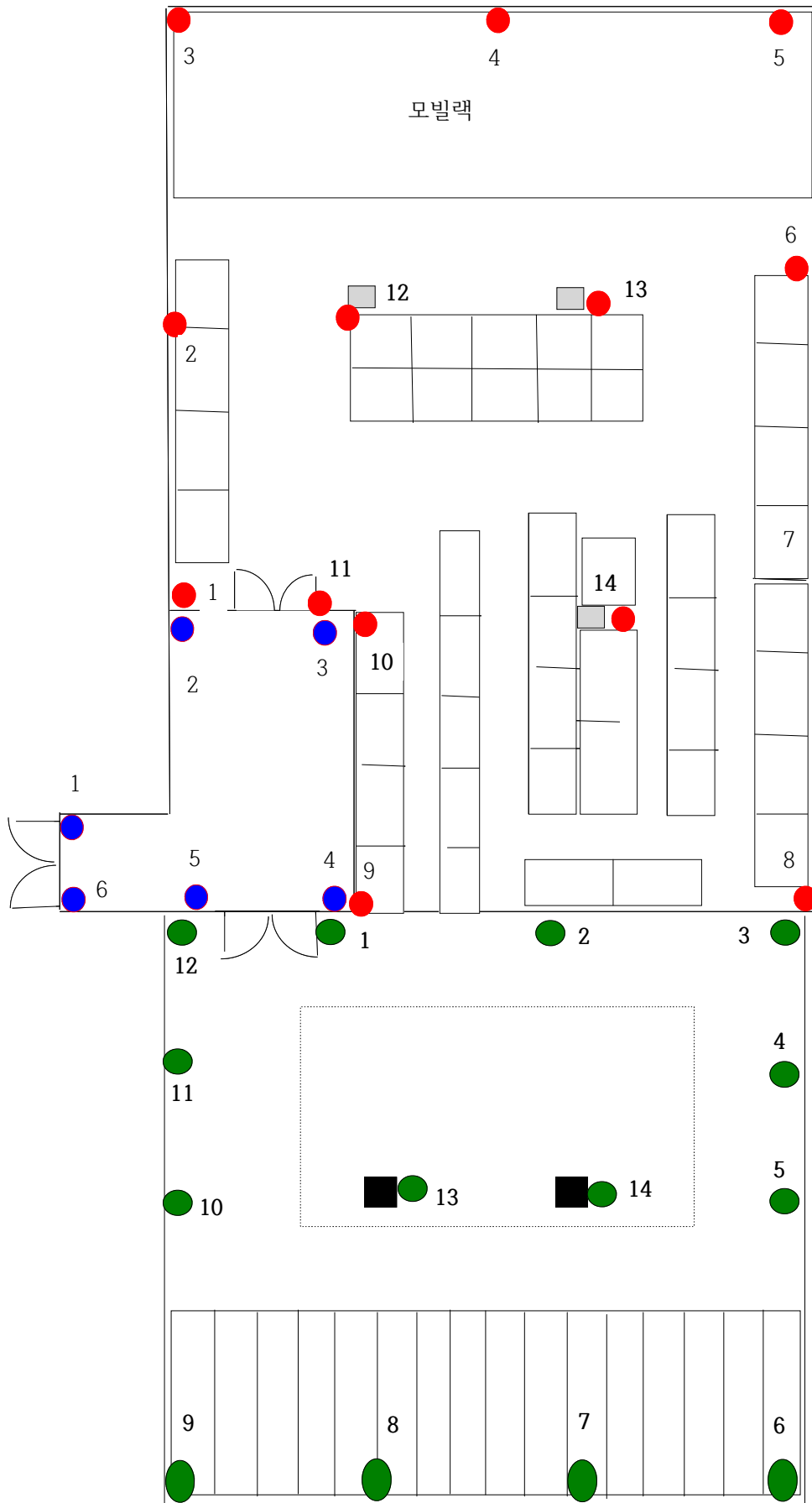
지하수장고복도: 트랩 32개



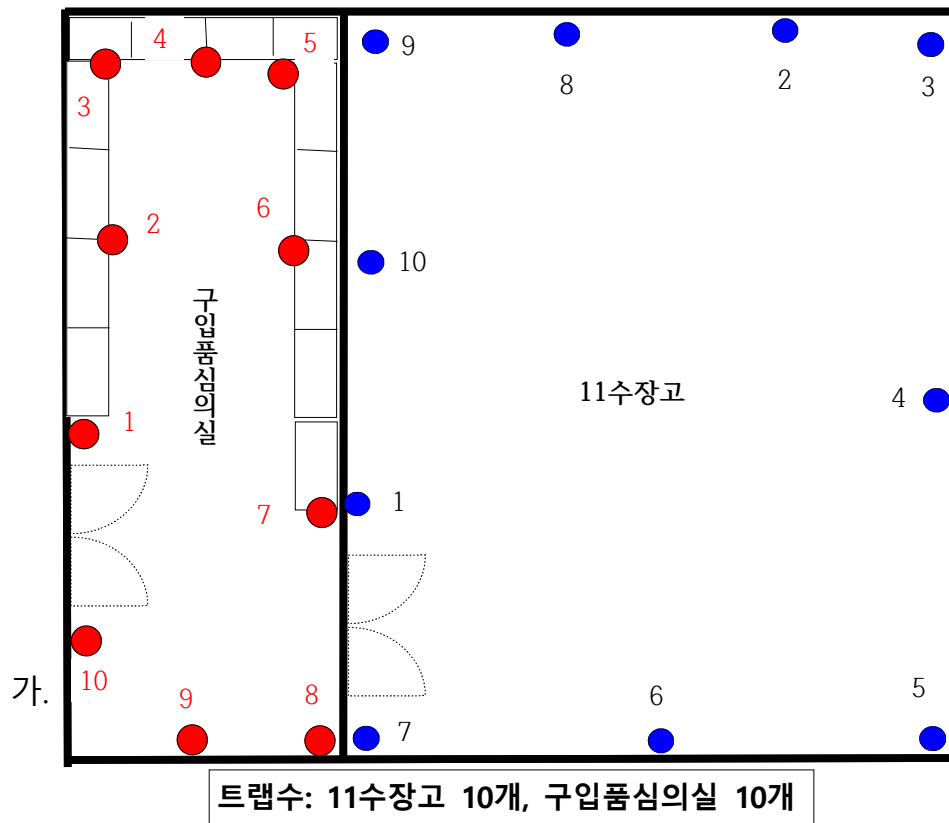
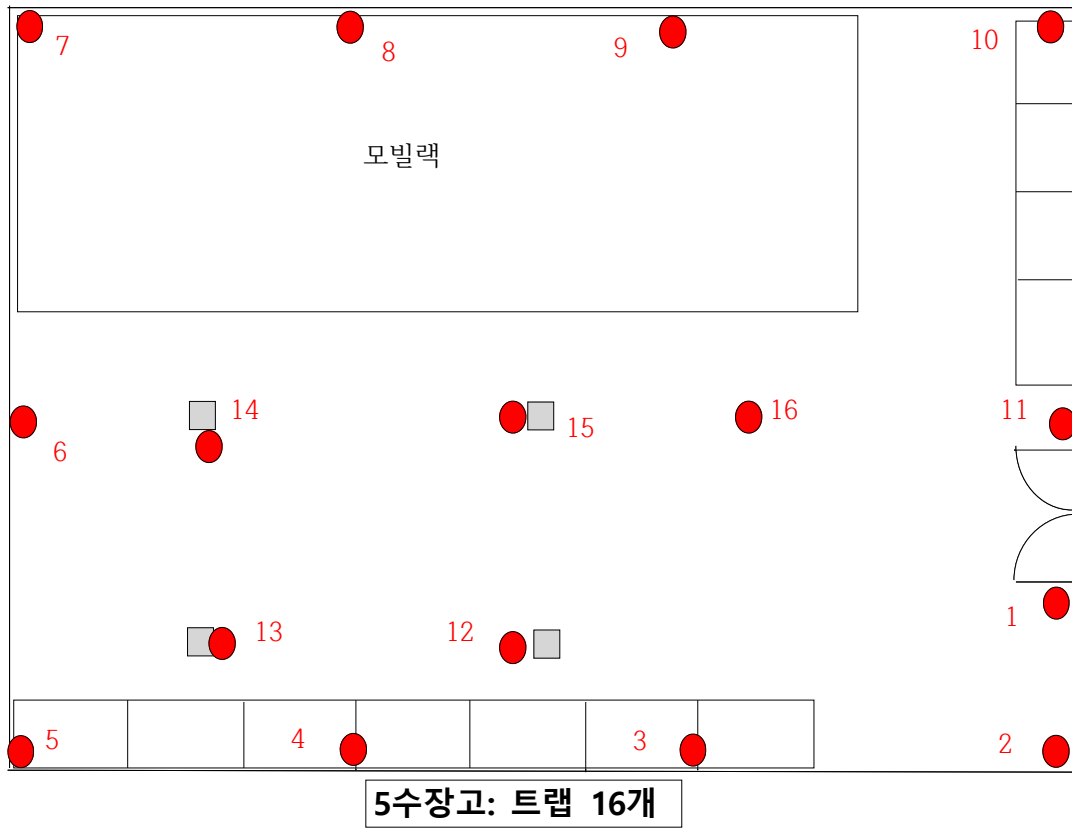
1수장고 트랩 19개



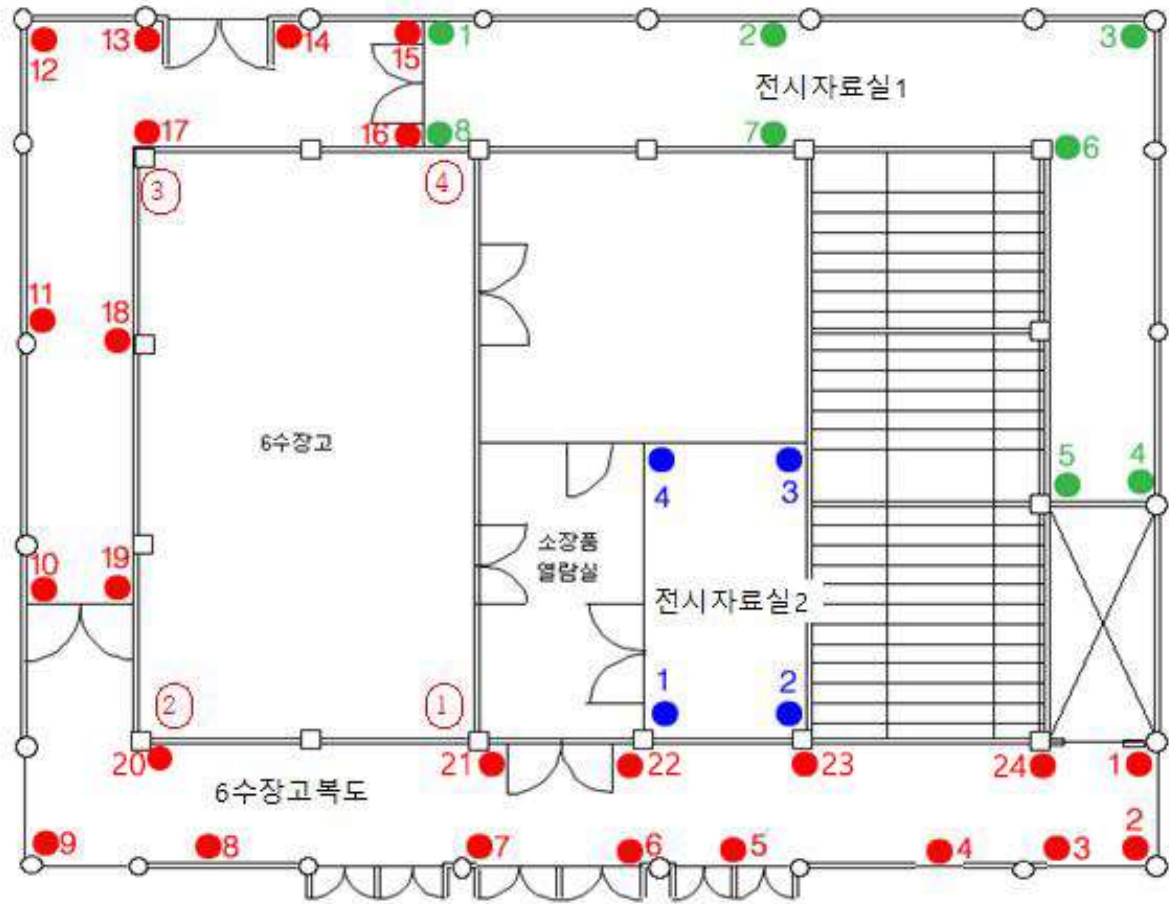
2수장고: 트랩 15개



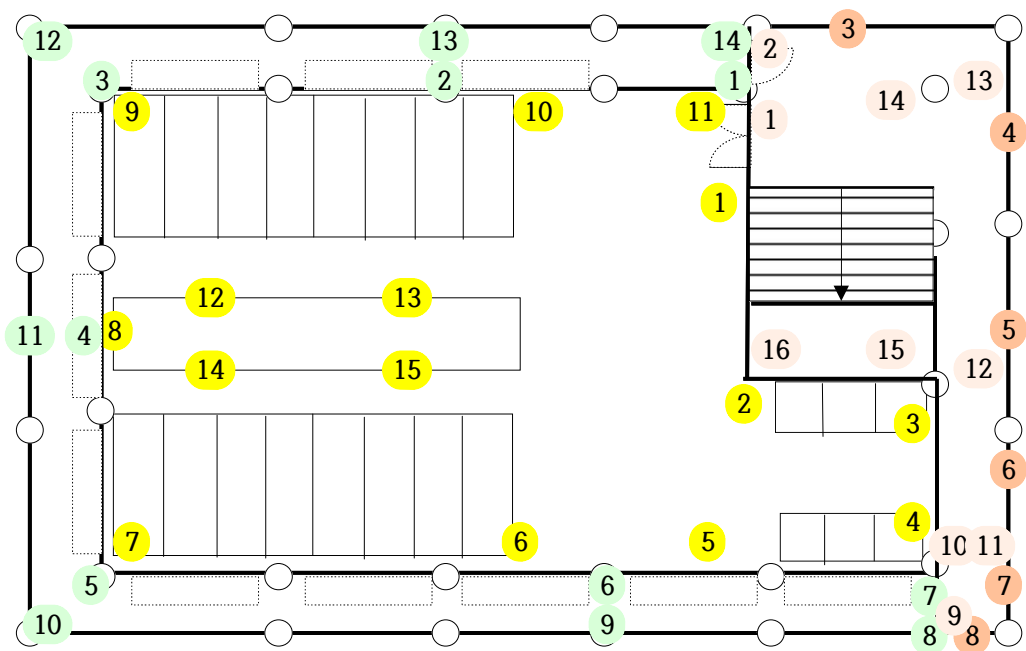
3,4수장고 전실: 트랩6개, 3수장고: 14개, 4수장고: 14개



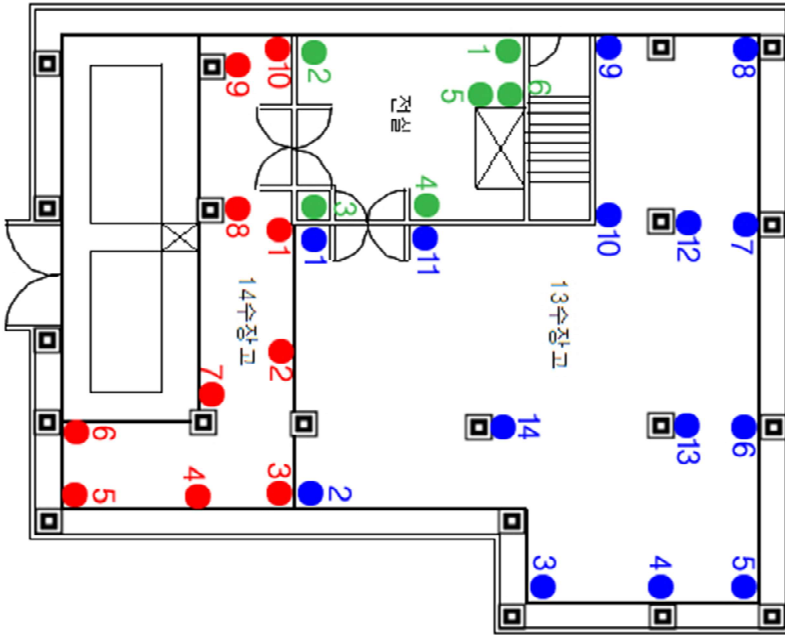
2. 지상수장영역



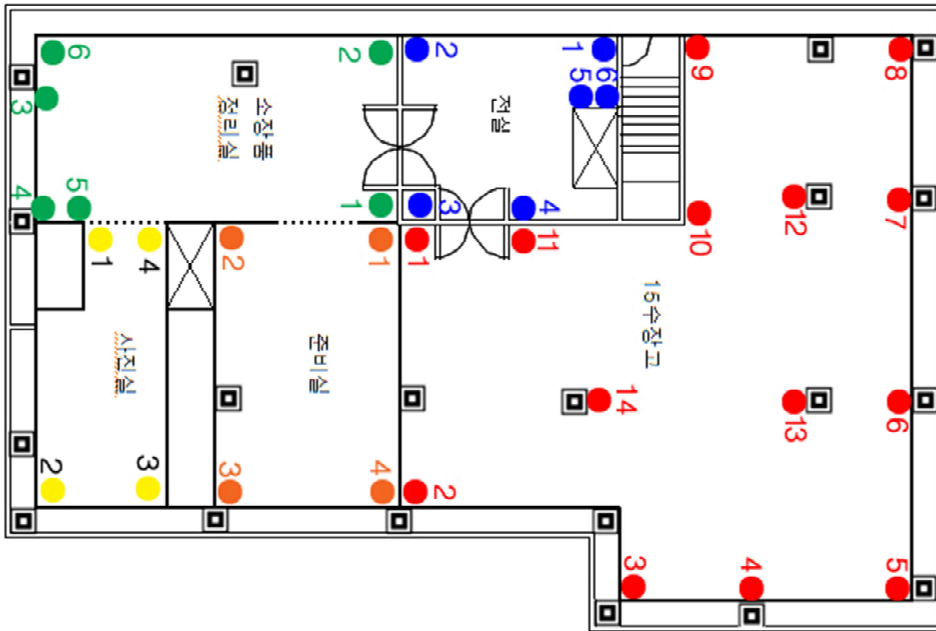
6수장고: 트랩4, 복도: 트랩23, 전시자료실1: 트랩8, 전시자료실2: 트랩4



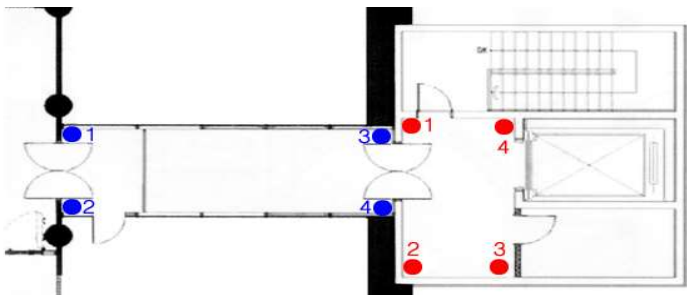
7수장고: 1~15, 7수장고복도: 1~16개, 12수장고: 1~14개



13, 14수장고 복도: 트랩 6개, 13수장고: 트랩 14개 14수장고: 트랩 10개



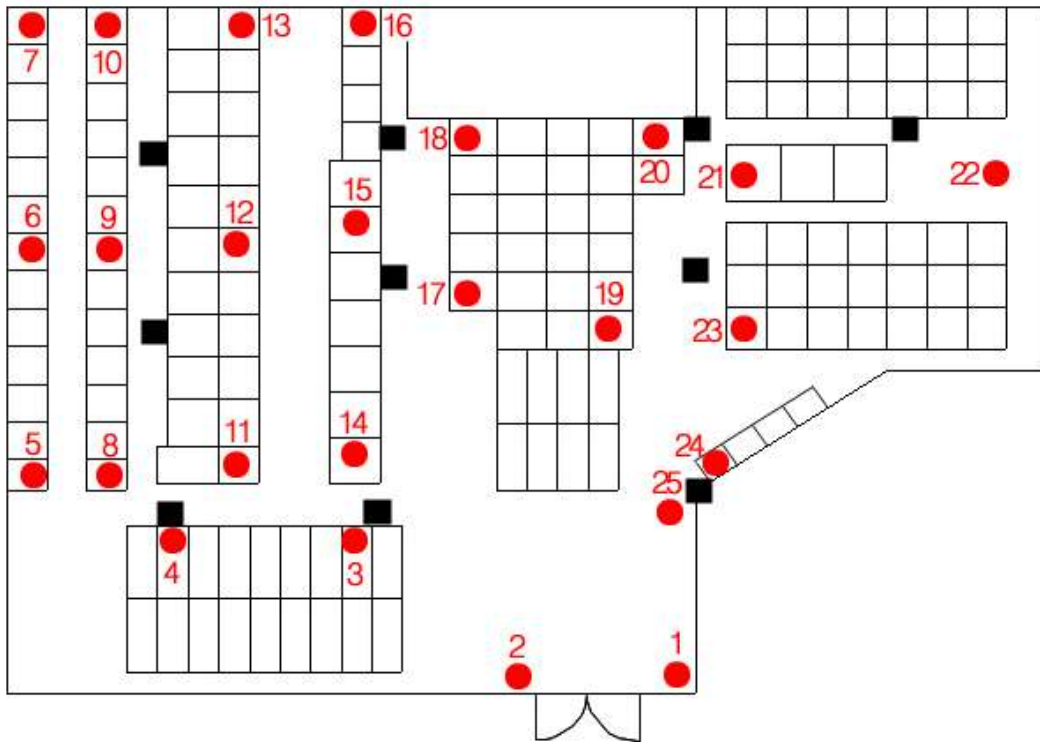
15수장고 복도: 트랩 6개; 15수장고: 트랩 14개, 소장품정리실: 트랩 6개 준비실: 트랩 4개, 사진실: 트랩 4개



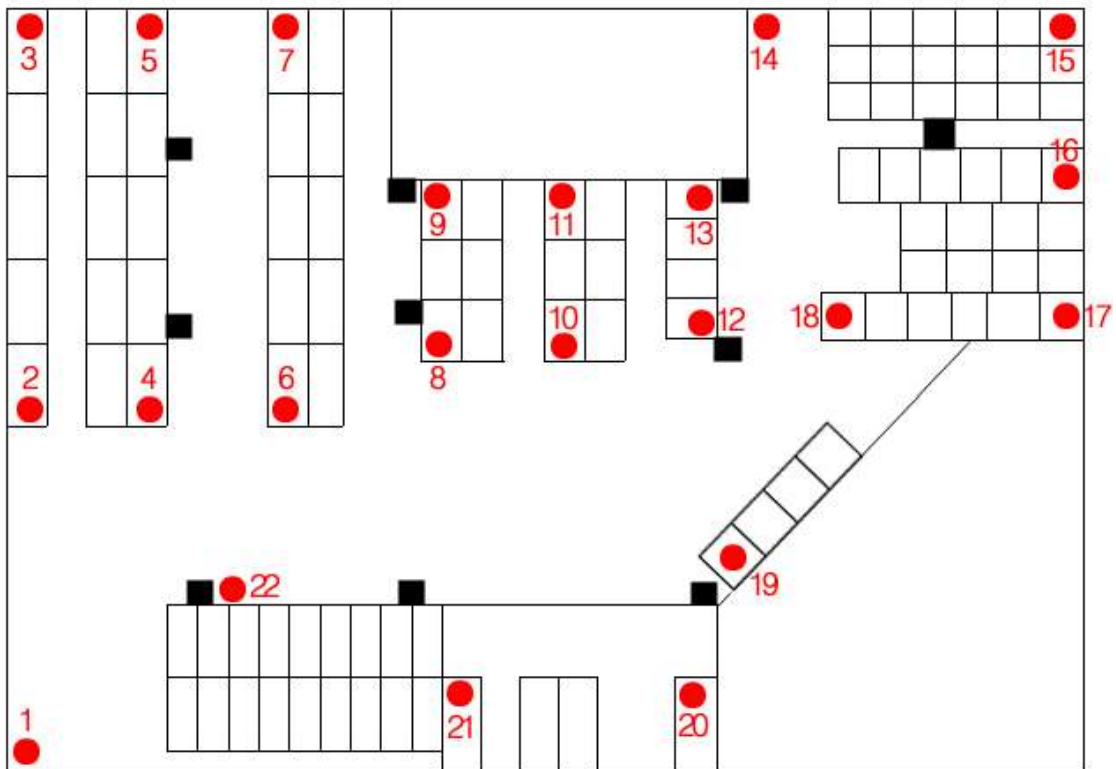
신축수장고연결통로: 트랩4개, 신축수장고3층: 트랩4개



8수장고: 트랩 8개

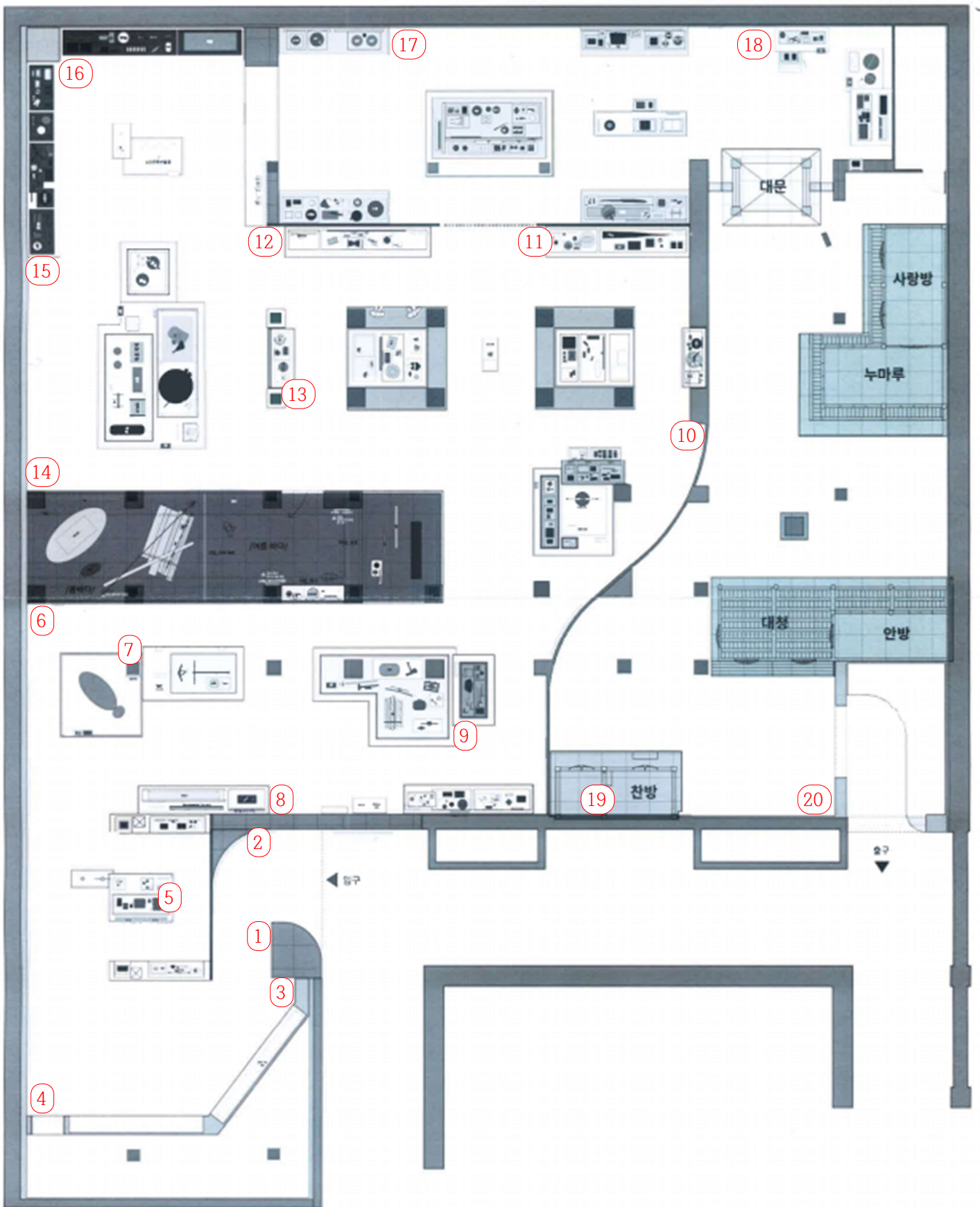


9수장고(별관1층): 트랩 25개



10수장고(별관2층): 트랩 22개

상설전시실 2관 배치도



상설전시실 3관 배치도

