

Rialto

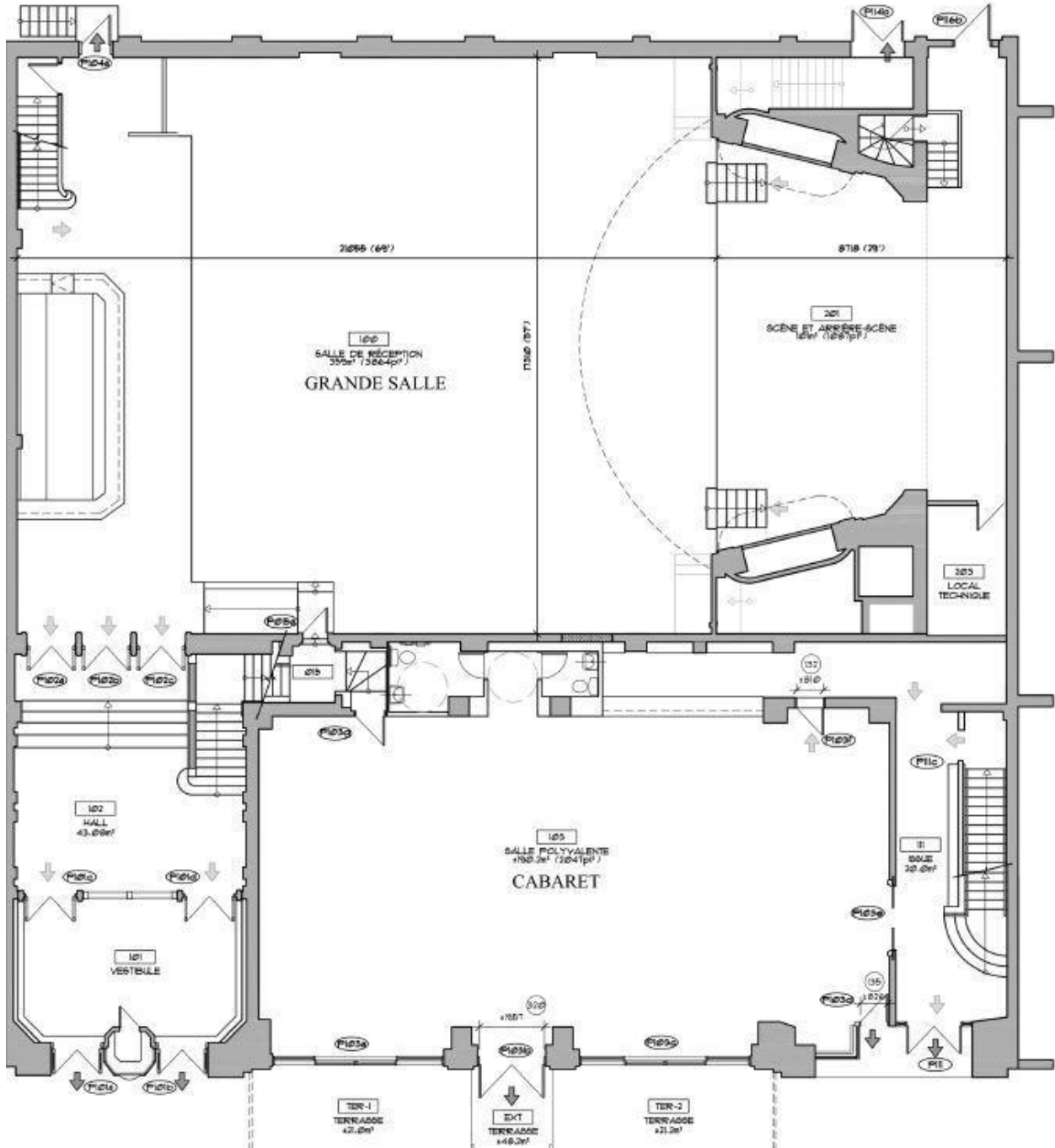
Technical specifications

Main Entrance: 5723 Avenue Du Parc, H2V 4S8, Montreal, Quebec

Plans and dimensions

- Stage Dimensions 22' x 28' approx. with a height of 50', No rigging is possible above the stage
- Room Dimensions 100'x60' (including stage).

PLAN DE SALLE GRANDE SALLE & CABARET



SOUND

FOH

- 1 Midas Heritage 3000 console (40 mono + 4 stereo)
- 1 Dolby LAKE processor
- 1 Eq Klark Teknik DN-360
- 1 Dual Gate Drawmer DS-201
- 1 Quad Gate Drawmer DS-404
- 1 Dual Comp. Drawmer DL-241
- 4 Comp. Dbx 160XT
- 1 TC Electronics D-TWO
- 1 Lexicon PCM-70
- 1 Yamaha SPX 990
- 1 Sony MU-R201 Digital reverb

FOH Sound System

- Adamson SpekTrix Compact Line-Array

- Configuration on the floor level: 3 SpekTrix + 1 Wave +1 SpekTrix Sub (double 18") per side + 1 sub Adamson T21 (double 21") center + 2 Adamson LX10 (Front fills)
- Configuration on the balcony level: 3 SpekTrix + 1 Wave +1 SpekTrix Sub (double 18") per side + 1 Adamson LX 10 in each

FOH Amplification

- 1 Lake LM 26
- 4 Lab Gruppen PLM 10000Q (line array)
- 1 Powersoft K10 (T21)
- 1 Powersoft M50Q (front fill + loge)

Monitor control

- 1 Yamaha M7cL 48 console

Monitors

- 6 Adamson M12
- 4 Adamson M15

Monitor Amplification

- 4 Powersoft K6

Stage

- 1 Radial Patch V12 3 voix (40in|8out)
- 2 Radial Subsnake Stage Flee 25' (12in)
- 1 Radial Subsnake Stage Flee 50' (12in)
- 1 Radial Subsnake Stage Box 25' (12in)
- 7 Atlas microphone stands
- 21 silver Mircophone Boom stands
- 12 Mini Boom stands
- 14 XLR 50'
- 25 XLR 25'
- 25 XLR 15' or less
- Assortment of SpeakON cables for monitors

Microphones

- 12 Shure SM58
- 5 Shure SM57
- 1 Shure Beta 58
- 1 Shure Beta 57
- 3 Shure beta 98 w/ horn,drum clips
- 1 Shure Beta 52
- 2 shure Beta 94
- 1 Shure Beta 91
- 1 Neumann KMS 105
- 4 Sennheiser e604
- 3 Sennheiser MD 421
- 1 Audix D6
- 4 Rode NT5
- 2 Crown PZM

Wireless Microphones

- 5 Shure SL4 Receivers
- 4 Shure SLX4 Beltpacks
- 2 Beta 54 headsets microphones
- 2 shure UR1 Beltpacks
- 2 Shure UR2 Handheld SM58
- 2 shure UR1 Beltpacks
- 2 Shure UR4D Receivers

D. I Boxes

- 2 DI Radial Stereo passive
- 1 DI Radial Stereo Active
- 3 DI Radial Mono Passive
- 3 DI Radial Mono Active

*Wired Communication System ClearCom 3 units

*Wireless Communication System Pliant 5 units

*Wireless Communication System Motorola DTR 650 3 units

LIGHTING

Electricity

- 1 CAM-LOCK 400A (Lights) – 120/208 volt
- 1 CAM-LOCK 200A (Sound)– 120/208 volt
- 8 20A U-Ground circuits
- 8 15A U-Ground circuits

Console

- 1 Obsidian NX4 console

Dimmer

- 2 ETC Sensor 12X2.4K

Fixtures

- 4 PARnels ETC 750W
- 3 Blinders Lumi DWE 2600W
- 6 ETC Leko Source 4 jr. vari-focal 25-50 degrees 575W (FOH-PERMANENTS ON GUARD RAIL)
- 6 ETC Leko Source 4 jr. vari-focal 25-50 degrees 575W (TIPS)
- 6 MAC 101 Raw
- 6 CHAUVET ROGUE R1X WASH 15 Channels
- 6 CHAUVET ROGUE R1 SPOT 19 Channels
- 6 CHAUVET ROGUE R1 WASH 15 Channels
- 6 CHAUVET MAVERICK FORCE S SPOT 29 Channels

- 1 Followspot Robert Juliat, Manon

Rigging

- 1 motorized 12" truss upstage (1000 lbs)
- 1 motorized pipe under the screen (400 lbs)

Accessories

- 1 Antari HZ-500 Haze Machine
 - 1 Elation Opto-Splitter
 - Assortment of cables DMX-5, powerCON , Socapex, U-Ground et TL3
- 5', 10', 15', 25', 50'

VIDEO

- 1 Laser Projector Vivitek DU9800Z, 18000 lumens, long-throw
- Motorized Cinema screen 21'x13.5' with fixed maskings 16:9 ratio
- 1 Roland VR-50 Video Console

RISERS

- 4 4'x8'
- 4 2'x8'
- 7 4'X4'
- 74 11" legs
- 48 48" legs
- 40 40" legs

*A Yamaha GB-1 grand piano is available, 150\$ tuning charges apply. Approximately hour of silence required for tuning